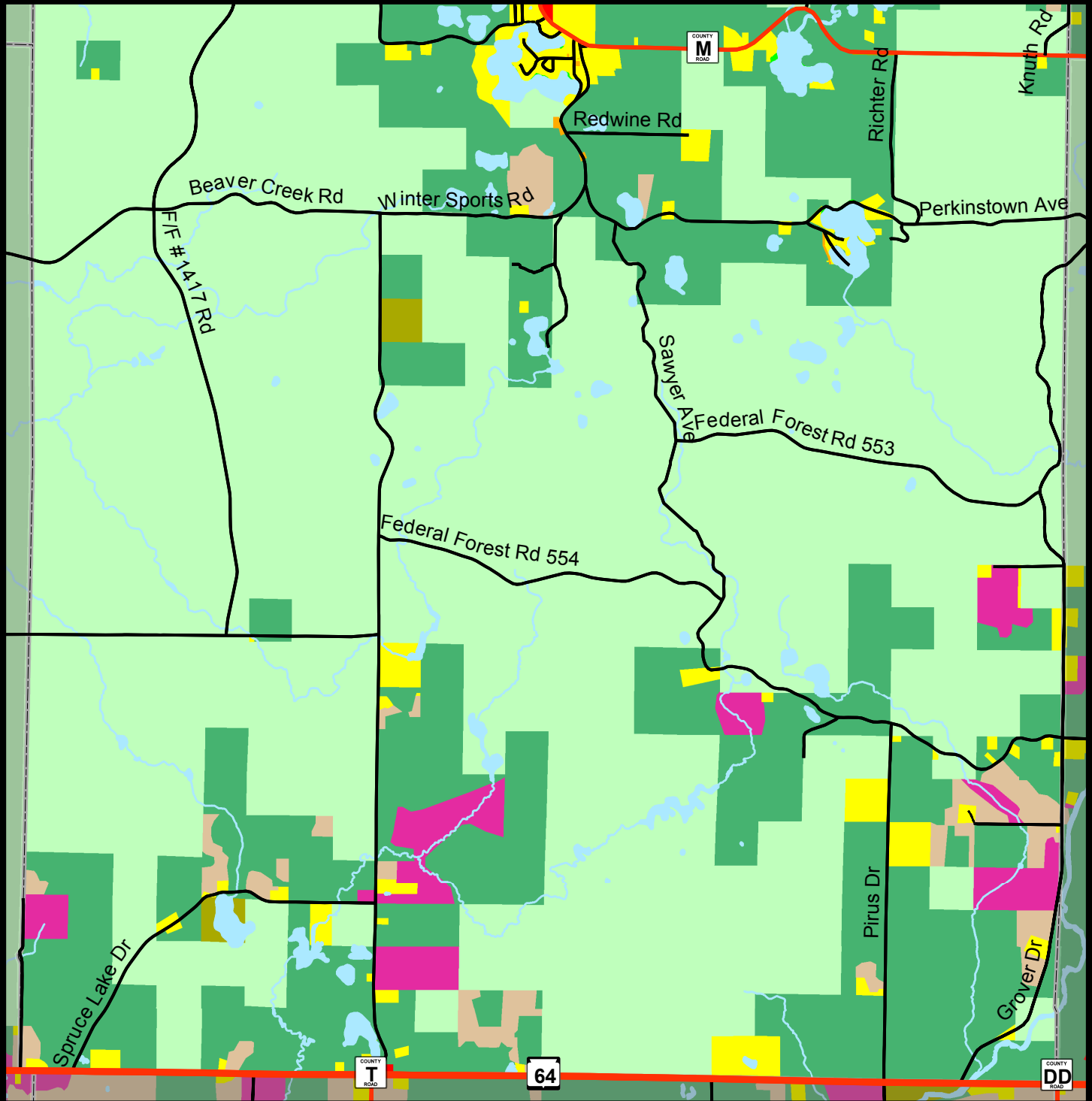


Map 8.9b

Final Draft

Existing Land Use, Town of Grover (South)



- | | | | | |
|-------------------------|---------|--------------------------|------------|-------|
| Agricultural | County | Government/Institutional | State | Water |
| Commercial | Federal | Manufacturing | Town | |
| Communication/Utilities | Forest | Residential | Open Space | |