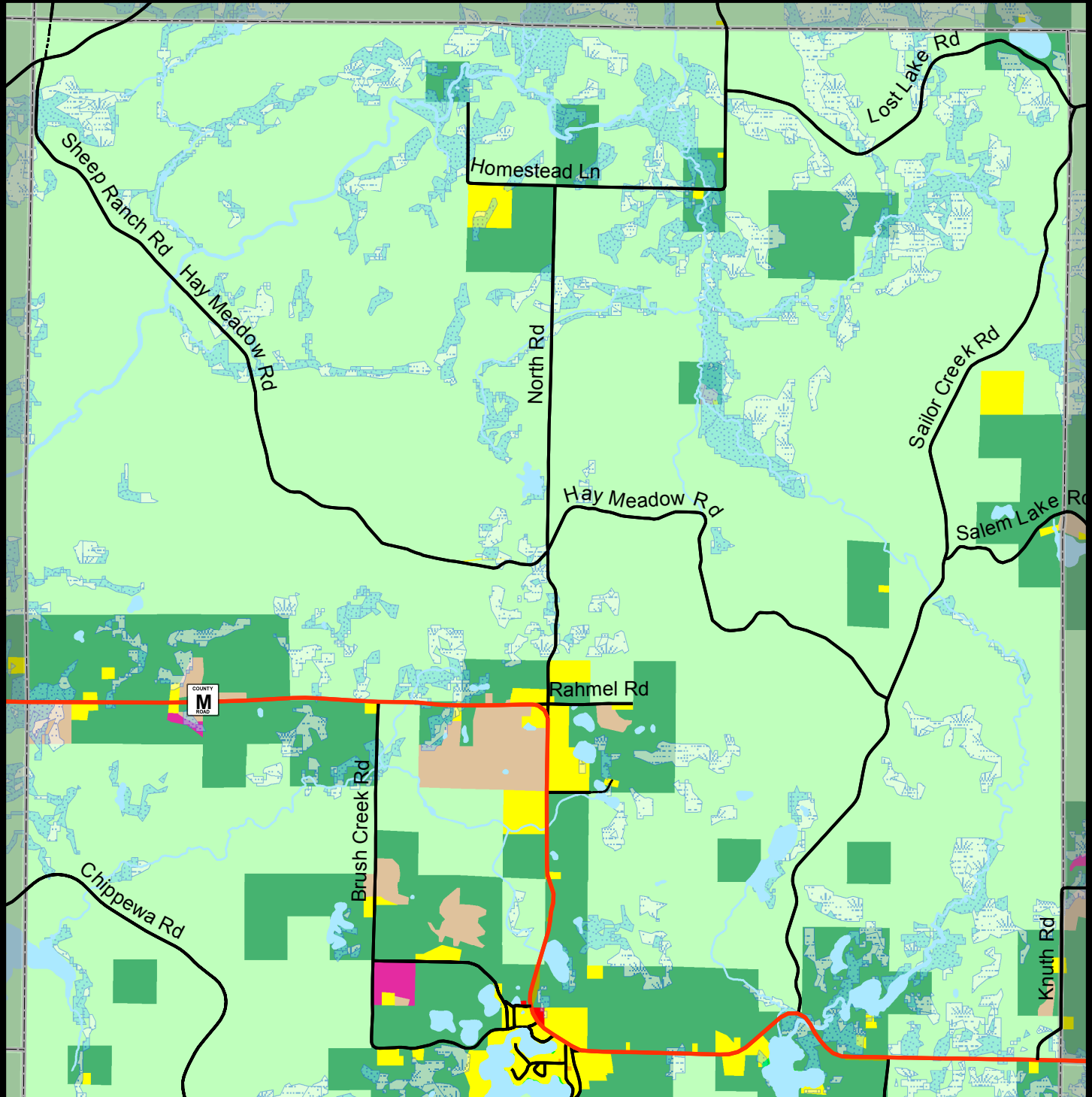


Map 8.31A **Final Draft**

Future Land Use, Town of Grover (North)



Wetlands		Future Land Use	
	Forested		Agricultural
	Wetland		Commercial
			Communication/Utilities
			Forest
			Residential
			Conservation
			Federal
			County
			Government/Institutional
			Manufacturing
			Open Space
			State
			Town
			Urban Residential
			Water