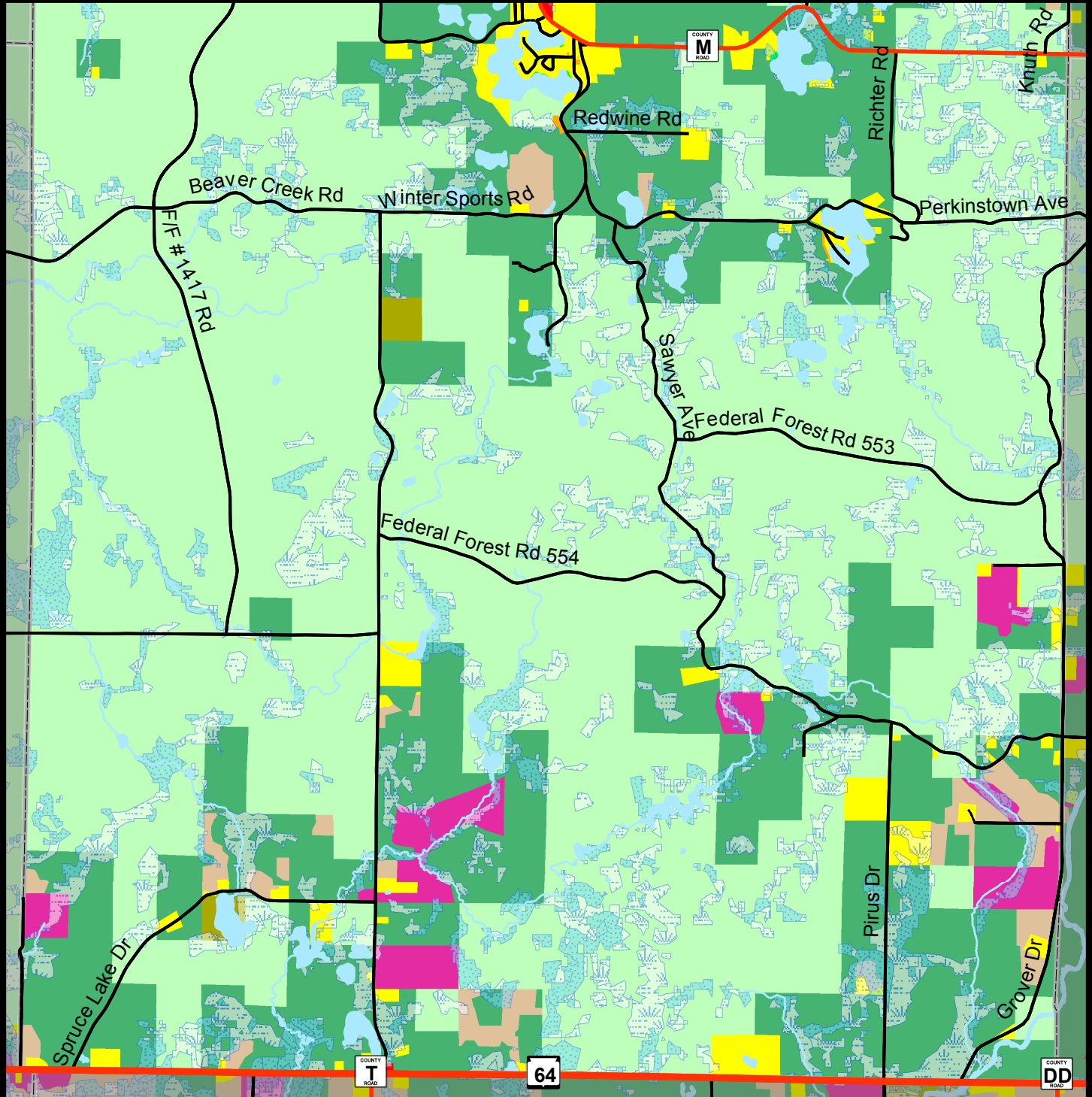


Map 8.31B

Final Draft

Future Land Use, Town of Grover (South)



Wetlands		Future Land Use	
	Forested		Agricultural
	Wetland		Commercial
			Communication/Utilities
			County
			Federal
			Forest
			Government/Institutional
			Manufacturing
			Open Space
			Residential
			Town
			Urban Residential
			Water